

Smarthinking Student Handbook

VERSION 3.0

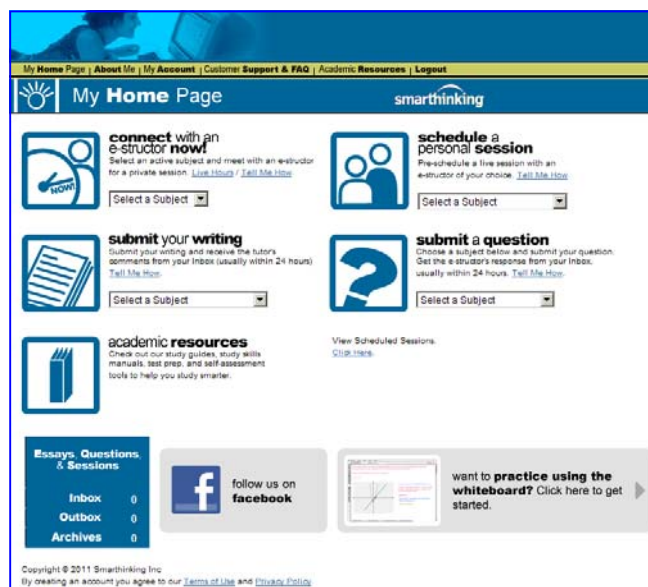


The leader in on-demand student support

Getting Started

The **Smarthinking Home Page** is the starting point for all of your tutoring interactions. The Menu Bar is found at the top of the screen, and includes hot links to the following:

- **My Home Page**-displays this page.
- **About Me**-opens up a form that will allow you to change your personal information.
- **My Account**-provides access to information about the amount of tutoring time available in your account as well as a list of sessions completed to date.
- **Customer Support & FAQ**-provides access to information that will help you solve any problems that arise when you are using Smarthinking
- **Academic Resources**-provides access to the Smarthinking Writer's and ESL Writer's Handbooks, an Accounting Glossary, a Study Guide Handbook, and links to sites that provide support for mathematics.
- **Log out**-allows you to log out of your account when you are finished using Smarthinking.



Tutoring options are displayed in the center of the screen.



connect with an e-structor now! is used when you want tutoring right away.



submit your writing is used to send the draft of an essay or paper for e-structor review.



schedule a personal session is used when you want to make an appointment for future tutoring.

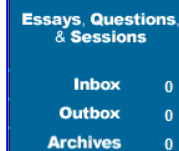


submit a question is used when you have decided to wait for a delayed response, rather than take time for a live session.



academic resources is used when you want to look for answers to your questions before engaging a tutor.

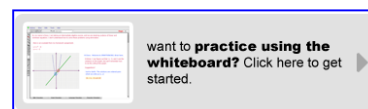
Additional options are displayed at the bottom of the screen.



Essays, Questions, & Sessions is located at the bottom of the screen. This is where you will find transcripts of your online sessions, copies of responses to questions you have submitted, and reviews/critiques of papers and essays submitted to the Essay Center.

Questions and Essays appear in the **Outbox** when they are submitted, in the **Inbox** when they are first returned, and in the **Archives** once they have been reviewed by you.

The home page also includes a link to the practice **White Board**. When you follow this link, you will be taken to a place where you can practice using the white board tools.

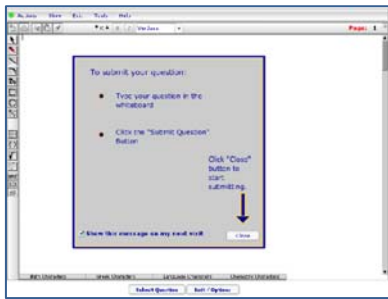
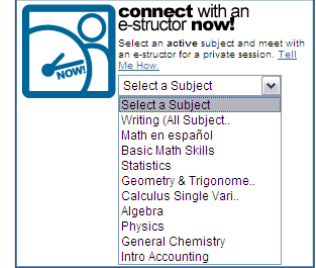


Finally, a link to the Smarthinking pages is provided. Click  to follow us on **facebook**.



connect with an e-structor now!

Live, drop-in tutoring is one of the easiest ways to quickly get the assistance you need. Simply select the subject of interest from the drop-down list.



The Smarthinking Whiteboard will appear with a message telling you to type your question on the whiteboard and click “Submit Question” when you are ready to work with a tutor.

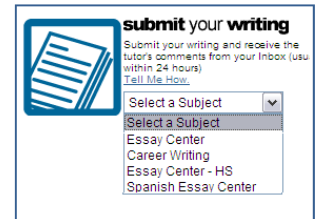
Write your question on the whiteboard, and click **Enter Question** when you are ready to connect with a tutor. Detailed instructions on the use of the whiteboard are provided at the end of this document.



submit your writing

When you have completed a draft of an essay or paper, submitting it to the Smarthinking essay center will allow you to have your work reviewed and critiqued.

The personalized response you receive from a Smarthinking e-structor can be used to guide the revisions you make to your work. Responses are typically provided in about 24 hours, and appear in your **Inbox**.



To begin, select the subject that reflects the type of writing you are submitting . Most academic writing will be submitted to the **Essay Center (or Essay Center—HS if you are a High School Student)**. Use the **Career Writing** center for business writing, and our **Spanish Essay Center** if your assignment is written in Spanish (e.g. It is for a Spanish language class.).

Next, complete the form shown at right. As you are doing so, please take special note of the following:

- Your assignment description should **exactly** match the description provided by your instructor, so that the tutor will be able to confirm that your work matches the requirements of the assignment.
- If you are requesting help with referencing/citations for a research paper, please let the tutor know which referencing style you are using. We support both MLA and APA styles.
- If you are not sure what type of help to request, the goals of your assignment may provide some guidance. Also, know that the tutors will make sure that your review provides you with information needed to revise your work and improve the quality of your writing.

Choose the type of tutor you want to review your writing. Choices include **First Available**, **ESL Specialist**, **Business/Technical Writing Specialist**, and **Creative Writing Specialist**. If your writing falls into a category supported by a specialist, it is best to choose that tutor group. The time required to review your essay is the same for each of these tutor groups.

The last step in the process is to upload and submit your assignment. You will see a screen confirming your submission, and an entry will appear in your **Outbox**.

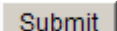
Note: The **Paragraph Submission** option is handled differently, and will be addressed in the next section.



submit your writing - Paragraph Submission

This option allows you to submit a single paragraph of up to 200 words for review and critique. Tutors will provide feedback for one higher-order concern and one lower-order concern for this paragraph

Follow these easy steps to use this option.

- Select **Paragraph Submission** from the drop-down menu under **submit your writing**.
- The form at right appears, with your name and school listed. Enter a description of your assignment.
- Provide a title for your paragraph. This will be used in menus to identify this piece of writing.
- Enter the text of your paragraph in the last box. Then click 



submit a question

Asynchronous tutoring is an alternative to live, drop-in tutoring that can be used when you do not have time for a live session, and are able to wait about 24 hours for a response.

To use this option, select the subject you want from the drop-down list. As with live tutoring, the whiteboard will open. Write your question on the whiteboard, and click **Submit Question**. A response will appear in your **Inbox** in about 24 hours.

Note: When you use this option, please make sure that you provide the tutor with specific information about the problem with which you need help. Specific questions work best. For example, ***I am having trouble adding fractions. Is $1/2 + 1/3 = 2/5$?*** provides the tutor with enough information to identify the source of the confusion, so that a detailed response can be provided. General questions do not work well in this format. For example, ***I do not understand fractions*** provides too little information for the tutor to provide a response targeted to the your problem.



academic resources

The academic resources links provide you with access to the Smarthinking Writer's and ESL Writer's Handbooks, an Accounting Glossary, a Study Guide Handbook, and links to other sites that provide support for students studying mathematics. These tools can be helpful to you as you complete your coursework, and may be used even if you do not connect with a Smarthinking tutor.



schedule a personal session

Most of the Smarthinking subjects provide you with the option of pre-scheduling a thirty minute session with the tutor of your choice. This can be helpful if you expect to have on-going need for assistance in a particular subject, and would like to work with the same tutor each time you come for help. This is also the only way to receive live help in some subjects.



schedule a personal session

Pre-schedule a live session with an e-tutor of your choice.
[Tell Me How.](#)

- Select a Subject
- Select a Subject
 - Basic Math Skills
 - Algebra
 - Geometry & Trigonome..
 - Microeconomics Princ..
 - Intro Accounting
 - Calculus Single Vari..
 - Statistics
 - Macroeconomics Princ..
 - Spanish
 - General Chemistry
 - Biology
 - Physics
 - Math en español

Choose your subject to check for tutor availability

Agents: Pre Set

Legend:

Rows: Math Skills

Oct 23 - 27, 2015

Timezone: Central Standard Time (Chicago)

TimeSlot	Fri, Oct 23	Sat, Oct 24	Sun, Oct 25	Mon, Oct 26	Tue, Oct 27	Wed, Oct 28	Thu, Oct 29
00:00 am							
01:00 am							
02:00 am							
03:00 am							
04:00 am							
05:00 am							
06:00 am							
07:00 am							
08:00 am							
09:00 am							
10:00 am							
11:00 am							
12:00 pm							
01:00 pm							
02:00 pm							
03:00 pm							
04:00 pm							
05:00 pm							
06:00 pm							
07:00 pm							
08:00 pm							
09:00 pm							
10:00 pm							
11:00 pm							
12:00 am							
01:00 am							
02:00 am							
03:00 am							
04:00 am							
05:00 am							
06:00 am							
07:00 am							
08:00 am							
09:00 am							
10:00 am							
11:00 am							
12:00 pm							
01:00 pm							
02:00 pm							
03:00 pm							
04:00 pm							
05:00 pm							
06:00 pm							
07:00 pm							
08:00 pm							
09:00 pm							
10:00 pm							
11:00 pm							
12:00 am							

Personal sessions must be scheduled at least 48 hours in advance, and must be cancelled at least 48 hours ahead if your plans or needs change.

Note: Time reported for your pre-scheduled session will reflect the time zone listed in your account information. Before using this feature, check the time zone for your account. It is listed at the top of the calendar.

Once you have scheduled a session, you will see a message on your home page reminding you of your appointment. A link to the session will appear at the time of the session. You may only join your scheduled session up to ten minutes before or ten minutes after its scheduled start time.

Your session is about to start in : 1 Days
You will see Start the Session link Five minutes before the session start time

Upgrade/Extend Your Personal Account

If you are using a textbook that includes a username and password for Smarthinking services, or need to update the account given to you by your school for the current term, you will use the Upgrade feature. To do this, logon to your Smarthinking account, and select **My Account**. Click on the schoolhouse icon, and enter the username and password you were given.

Upgrade/Extend Your Personal Account



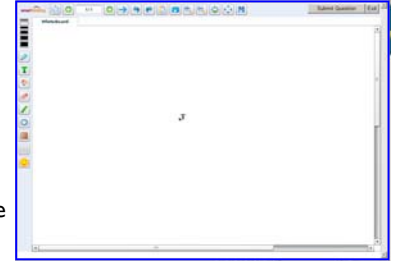
[New username from school and/or textbook?](#)
Extend your account with it.

Note: If you did not self-register for Smarthinking, you will not need to update your school account. You may still need to use this feature if you were provided with a username/password for this service in one of your textbooks.

smarthinking

The Whiteboard

You will use the Smarthinking whiteboard whenever you drop-in for live tutoring, submit a question, or participate in a pre-scheduled tutoring session. The whiteboard allows you and your tutor to enter text, symbols, and drawings that identify and help answer your questions.



Entering Text

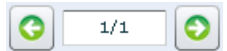
Left click with your mouse and type at the point where you want text to appear. The text tool is active by default when you first enter the whiteboard.

Special Tools

There are a variety of special tools displayed across the top of the screen. Each of these is described below.



Clicking on this icon opens a new, blank page that can be used during a tutoring session. When a session has multiple pages, you can move between them by clicking on the left and right arrows that appear next



The **Pointer Tool** allows you to place an arrow

on the whiteboard to direct the tutor's attention to a particular piece of the content that has been placed there.



Clicking on this icon



The **Share a Document Tool** allows you to bring a PDF file to the whiteboard to share with your tutor.



The **Capture Tool** allows you to take a screen shot of the whiteboard.



The **Zoom Tools** allow you to increase or decrease the size of the information on the whiteboard. To return to the actual size of the information on the whiteboard, click



Use the **Math Symbols Tool** to access any of these special math symbols.



The tools below are found along the left side of the whiteboard.

Most of the tools function in the same way. To use these tools:

- Select the tool by left clicking on its icon with your mouse.
- Left click on the whiteboard, and hold the key down while you drag to the right to create the image you want.



Use the **Thickness** tool to change the width of lines used in graphics and text. Left click on the line that represents the thickness you want.



Use the **Freehand Drawing Tool** to draw or write on the whiteboard.



Use the **Text Tool** to enter text on the whiteboard..



Use the **Remove Tool** to select text or a graphic image and remove it from the whiteboard.



Use the **Eraser** to remove parts of the text or images that have been entered on the whiteboard.



Use the **Line Tool** to create a line on the whiteboard.



Use the **Outline Tool** to create outlines of circles, rectangles, ovals, or triangles on the whiteboard., Click on the **Outline Tool** icon and select the shape you want.



Use the **Solid Tool** to create solid circles, rectangles, ovals, or triangles on the whiteboard., Click on the **Solid Tool** icon and select the shape you want.



Use the **Grid Tool** to place graph paper or grid lines on the whiteboard. Click on the **Grid Tool** and select the display you want.



Use the **Smiley Tool** to comment on the information placed on the whiteboard by your tutor..

